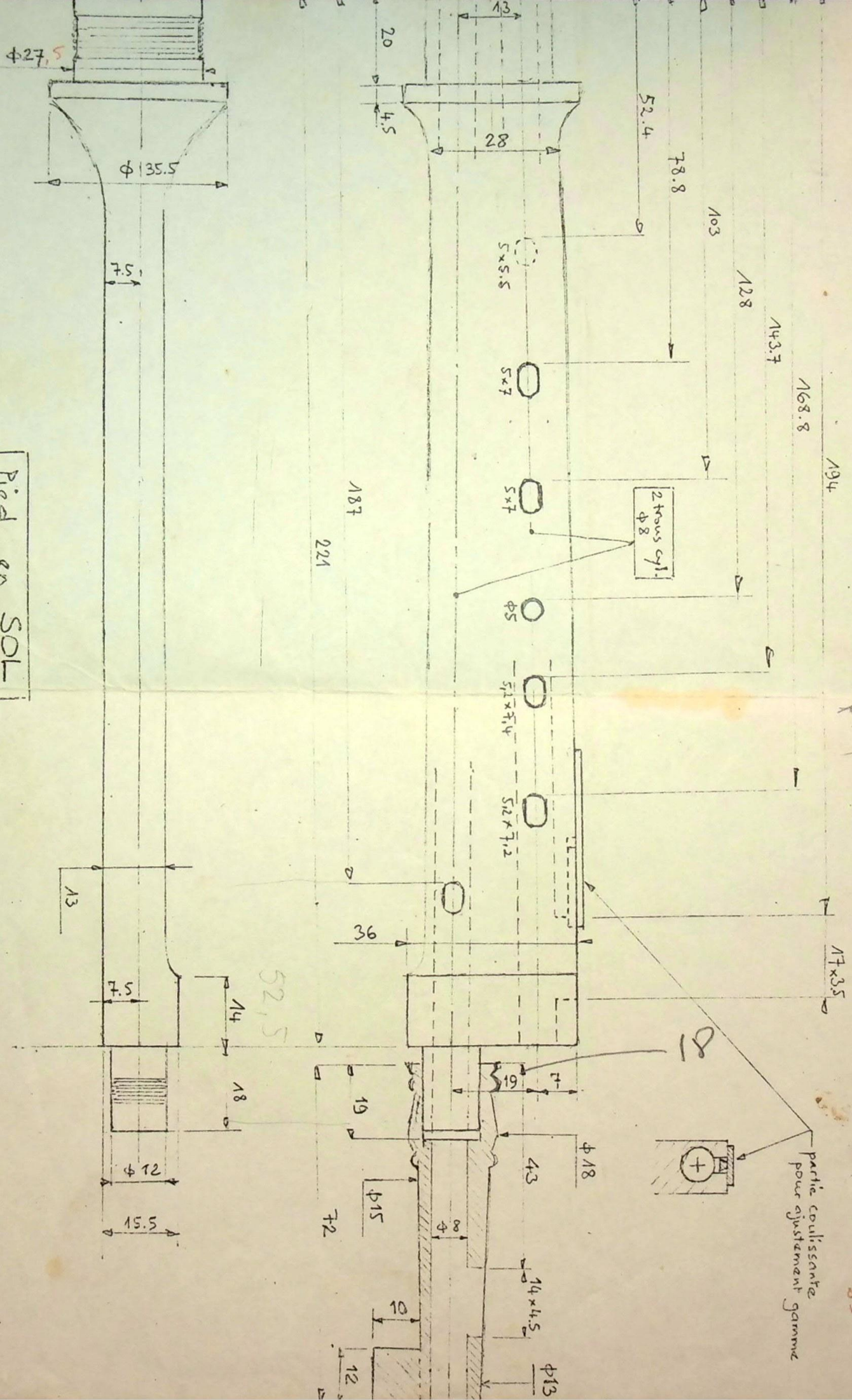


Pied en SOL



2 trous $\phi 8$

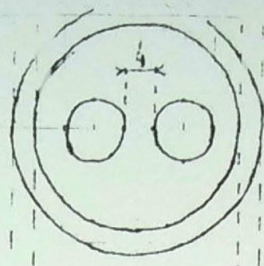
partie coulissante pour ajustement gamme

915

LT = 239

221
18
239

perce ϕ 8
d'entre axes 12

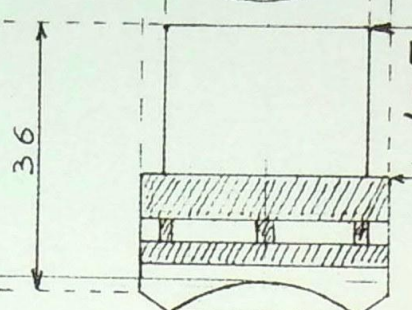
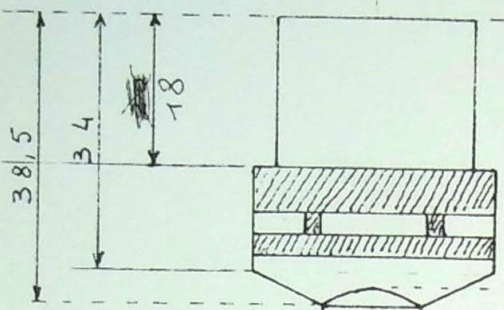


ϕ 27,5

no 5, p...



+ 1 à l'usage...



12,5

ϕ fraise 3,3
170

25

42,5

127

15,5

67,5

75

89

112

127,4

149,2

151

ϕ 33

127

15,5

67,5

75

89

112

127,4

149,2

151

89

112

127,4

149,2

151

136

215

14

49
48

7,3

31,7

ϕ 12,5

18

17

d'entre axe 16

